

Shipshape Stranded Pulsewarmers

by Thea M. Gray

Ahoy! If this is your first stranded colorwork project, consider working one of the two-color charts; there are fewer long stretches of a single color than in the three-color variations, and therefore fewer floating strands that will require trapping.

Size ranges given are approximate and will vary based on tension; the S or M are likeliest sizes for an average-size woman, the XS for a child, and the XL for a man.



Materials

- size US 4 (3.5 mm) needles—any configuration for working a small cylinder in the round (double points, two circulars, magic loop, or 9" circular)
- small amount of DK weight yarn in two or three colors—one finished pulsewarmer weighs ≤15 grams, so this is a good stashbuster
- stitch markers (optional, and can be pieces of yarn tied in a slipknot)
- tapestry needle or crochet hook

Gauge

Approx. 5.75-6 stitches and 7 rows per inch for charted pattern worked in stockinette in the round

Sizes

XS (S, M, L, XL); approximately 6-1/4" (6-3/4", 7-1/4", 7-3/4", 8-1/4") in circumference.

Pattern



Cast on 32 (36, 40, 44, 48) stitches. Join in the round, being careful to not twist. Markers can be placed at the end of the round and between the chart repeats.

Round 1: Knit.

Round 2: Purl.

Rounds 3-25 (25, 25, 26, 26): Work appropriate sized chart (two- or three-color version) in stockinette, twice per row.

Round 26 (26, 26, 27, 27): Purl.

Round 27 (27, 27, 28, 28): Knit.

Bind off all stitches in purl. Work in ends using a tapestry needle or crochet hook.

Don your pulsewarmer and dance (or swear) like a sailor if it pleases you.

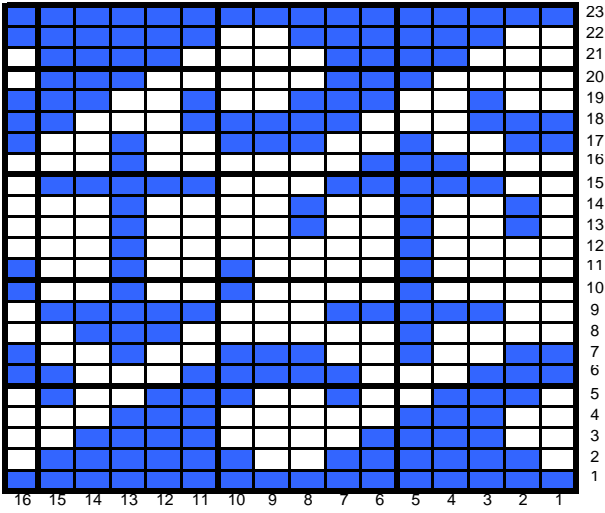
Photos of size M, 3-color chart.

© 2010 Thea Gray. Please do not sell, reprint, or re-knit this pattern for profit.

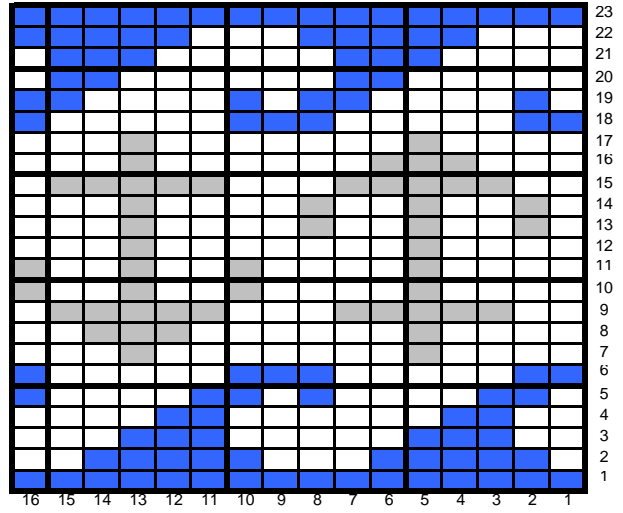
For information on Thea Gray's classes and retreats, visit www.theagray.com or knitOrama on Ravelry.

TWO-COLOR

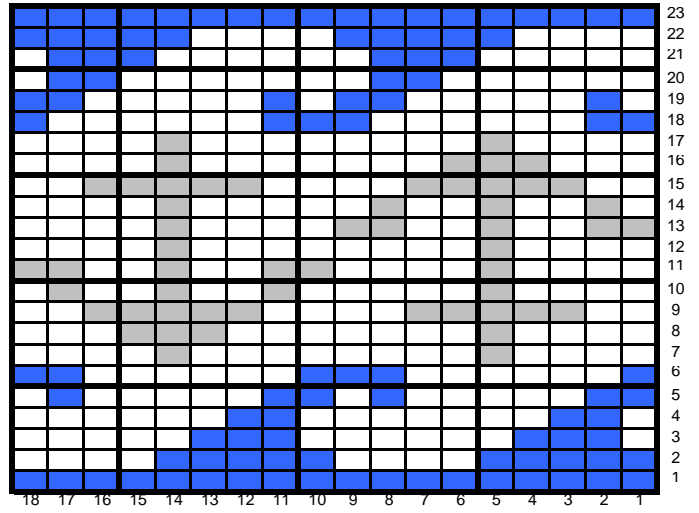
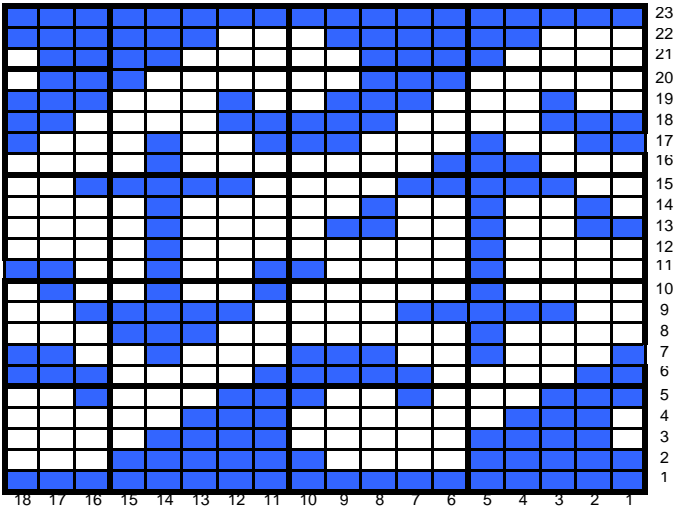
XS



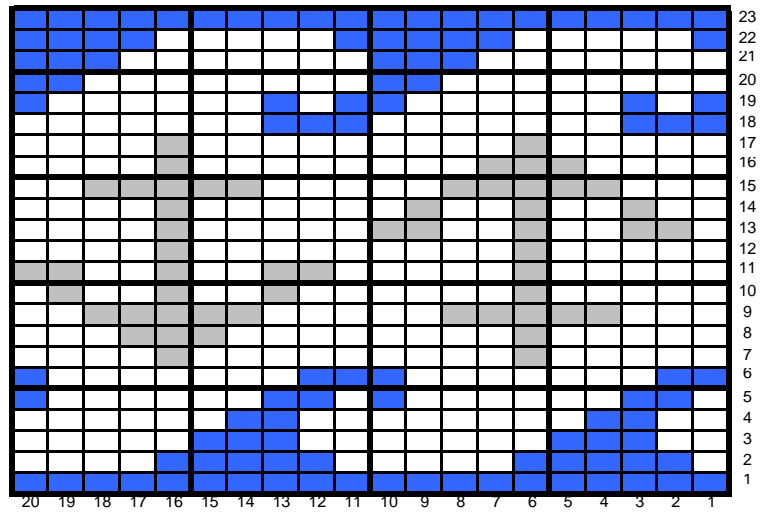
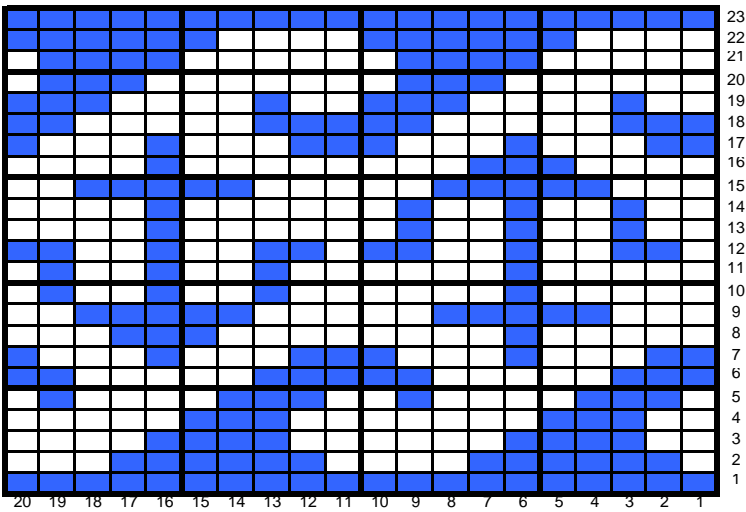
THREE-COLOR



SMALL

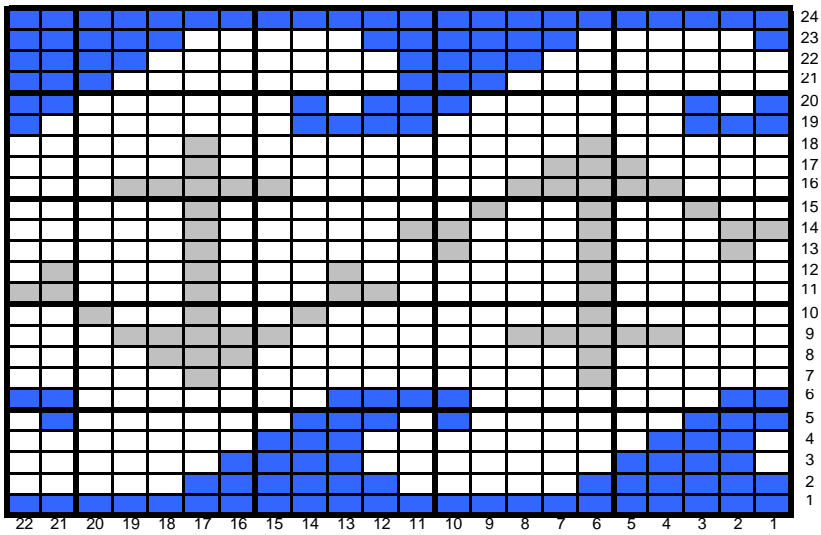
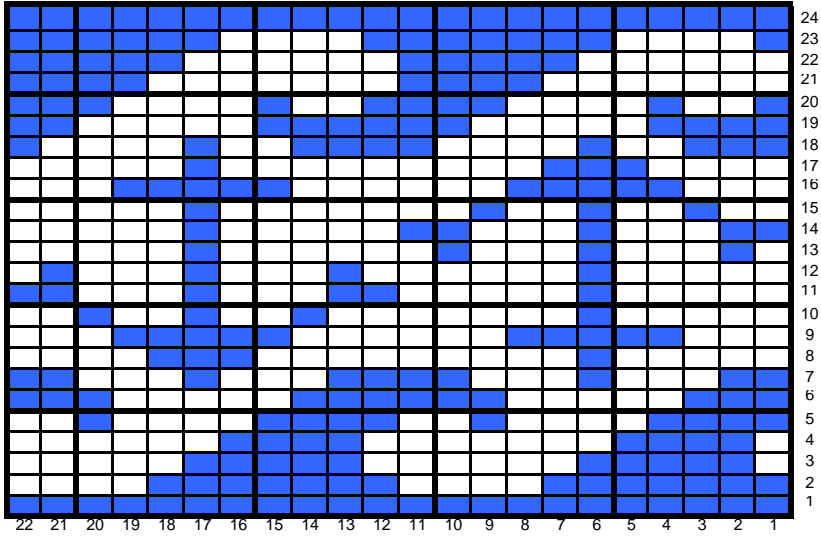


MEDIUM



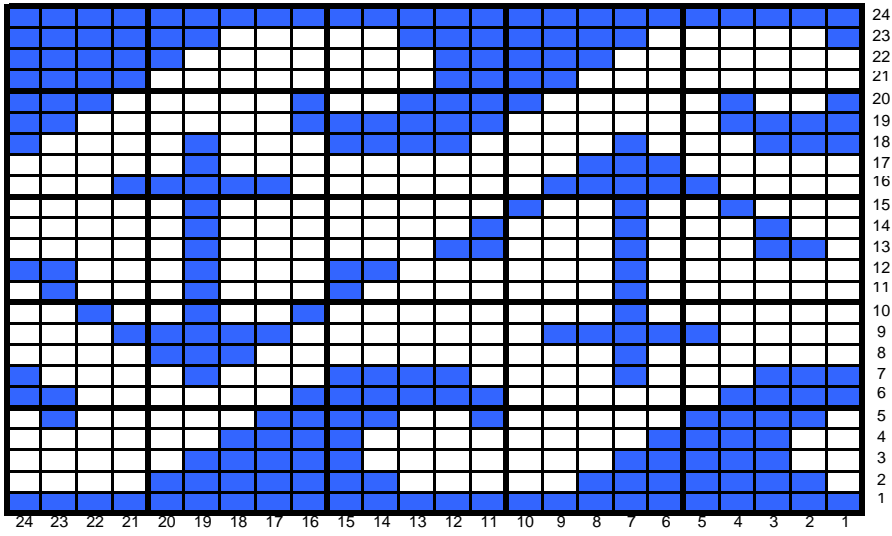
COLOR CHARTS, cont

LARGE



COLOR CHARTS, cont

X-L



X-L

